

Reference 4

Iron toxicity



Photo 4.1. Symptoms of iron toxicity on leaves



Photo 4.2. Symptoms of iron toxicity in the field



Photo 4.3. Oxidised iron spots on soil

Reference 14

Plant nutrients



Photo 14.1. Symptoms of nitrogen deficiency



Photo 14.2. Symptoms of phosphorus deficiency



Photo 14.3. Symptoms of potassium deficiency



Photo 14.4. Symptoms of zinc deficiency

Reference 22

African rice gall midge



Photo 22.1. African rice gall midge; adult

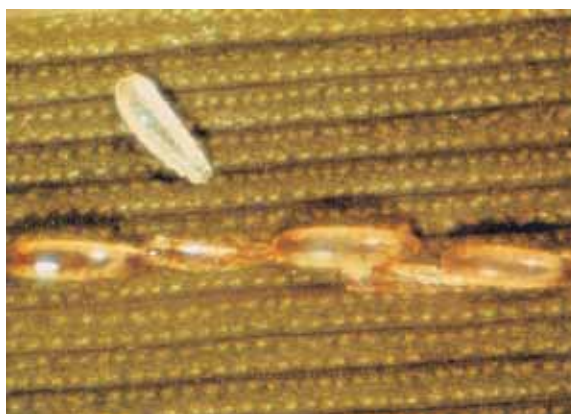


Photo 22.2. African rice gall midge; eggs



Photo 22.3. African rice gall midge; larva



Photo 22.4. African rice gall midge; cocoon



Photo 22.5. Symptoms of the African rice gall midge in the field



Photo 22.6. Symptom of the African rice gall midge on the plant (onion leaf)

Reference 23

Rice stem borers



Photo 23.1. Symptom of stem borer:
dead heart



Photo 23.2. Symptom of stem borer:
white head



Photo 23.3. Lepidopteran stem borer
Chilo zacconius



Photo 23.4. Dipteran stem borer
Diopsis thoracica

Reference 24

Major diseases in rice



Photo 24.1. Pyriculariosis: symptom on leaf



Photo 24.2. Pyriculariosis: symptom on the node



Photo 24.3. Rice Yellow Mosaic Virus (RYMV): symptoms of leaves



Photo 24.4. RYMV: symptoms in the field

Reference 24

Major diseases in rice



Photo 24.5. Bacterial leaf blight



Photo 24.6. Bacterial leaf blight



Africa Rice Center (WARDA)

01 B.P. 2031, Cotonou, Benin

www.warda.org